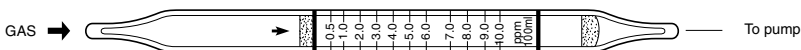


Tube No.  
**109SB**

# CHLORINE



## 1. PERFORMANCE

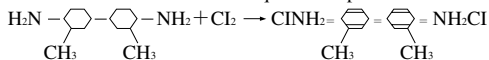
- |                          |   |               |             |
|--------------------------|---|---------------|-------------|
| 1) Measuring range       | : 0.5-10 ppm  | 0.125-2.5 ppm | 0.1-2.0 ppm |
| Number of pump strokes   | 1 (100mℓ)   | 4 (400mℓ)     | 5 (500mℓ)   |
| 2) Sampling time         | : 1 minute/1 pump stroke                                    |               |             |
| 3) Detectable limit      | : 0.06 ppm (500mℓ)  |               |             |
| 4) Shelf life            | : 2 years   |               |             |
| 5) Operating temperature | : 0 ~ 40 °C   |               |             |
| 6) Reading               | : Direct reading from the scale calibrated by 1 pump stroke |               |             |
| 7) Colour change         | : White → Pale orange                                       |               |             |

## 2. RELATIVE STANDARD DEVIATION

RSD-low : 10 %    RSD-mid. : 5 %    RSD-high : 5 %

## 3. CHEMICAL REACTION

*o*-Toluidine is oxidized and Orthoquinone is produced.



## 4. CALIBRATION OF THE TUBE

PERMEATION TUBE METHOD

## 5. INTERFERENCE AND CROSS SENSITIVITY

Substance	Interference	ppm	Coexistence
Bromine	Pale yellow stain is produced.	1	Higher readings are given.
Chlorine dioxide	∕	1	∕
Nitrogen dioxide	∕	Chlorine conc. × 1/5	∕
Nitrogen trichloride	∕	5	∕

(NOTE)

When the concentration is below 2 ppm, 4 or 5 pump strokes can be used to determine the lower concentration.

Following formula is available for the actual concentration.

Actual concentration = Reading value × 1 / Number of strokes