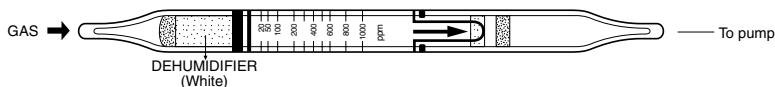


# METHYL ALCOHOL (METHANOL)



## 1. PERFORMANCE

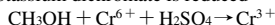
- 1) Measuring range : 20-1,000 ppm
- Number of pump strokes : 1 (100mℓ)
- 2) Sampling time : 1.5 minutes/1 pump stroke
- 3) Detectable limit : 5 ppm
- 4) Shelf life : 2 years
- 5) Operating temperature : 0 ~ 40 °C
- 6) Temperature compensation : Necessary (0 ~ 20 °C) (See "TEMPERATURE CORRECTION TABLE")
- 7) Reading : Direct reading from the scale calibrated by 1 pump stroke
- 8) Colour change : Yellow → Pale blue

## 2. RELATIVE STANDARD DEVIATION

RSD-low : 15% RSD-mid. : 10% RSD-high : 10%

## 3. CHEMICAL REACTION

Potassium dichromate is reduced

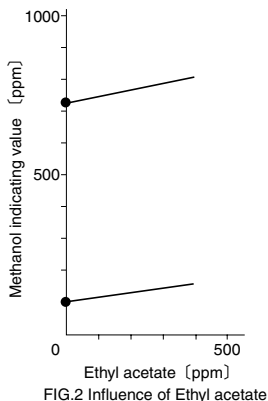
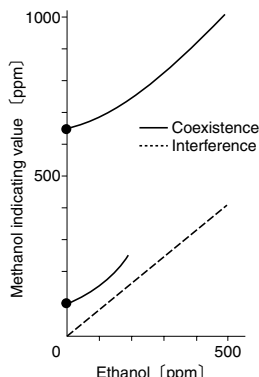


## 4. CALIBRATION OF THE TUBE

GAS CHROMATOGRAPHY

## 5. INTERFERENCE AND CROSS SENSITIVITY

| Substance   | Interference                       | Coexistence                |
|---|------------------------------------|----------------------------|
| Alcohols FIG.1                                    | Similar stain is produced.         | Higher readings are given. |
| Esters FIG.2                                      |                                    | ∕                          |
| Paraffin hydrocarbons (more than C <sub>3</sub> ) | Whole reagent is changed to Brown. | ∕                          |
| Aromatic hydrocarbons                             | ∕                                  | ∕                          |
| Ketones   | ∕                                  | ∕                          |
| Halogenated hydrocarbons                          | ∕                                  | ∕                          |



TEMPERATURE CORRECTION TABLE

| Scale Readings (ppm) | True Concentration (ppm) |                 |                        |
|----------------------|--------------------------|-----------------|------------------------|
|                      | 0 °C (32 ° F)            | 10 ° C (50 ° F) | 20-40 ° C (68-104 ° F) |
| 1000                 | 1200                     | 1100            | 1000                   |
| 800                  | 960                      | 880             | 800                    |
| 600                  | 600                      | 660             | 600                    |
| 400                  | 480                      | 440             | 400                    |
| 200                  | 240                      | 220             | 200                    |
| 100                  | 120                      | 110             | 100                    |
| 50                   | 60                       | 50              | 50                     |
| 20                   | 24                       | 20              | 20                     |