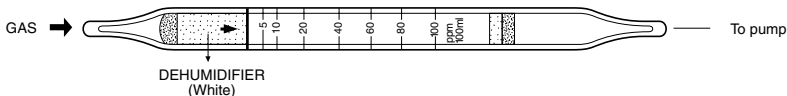


Tube No.
168SC

1,3-BUTADIENE



1. PERFORMANCE

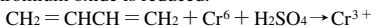
- | | | |
|--------------------------|---|------------|
| 1) Measuring range | : 5-100 ppm | 2.5-50 ppm |
| Number of pump strokes | 1 (100mℓ) | 2 (200mℓ) |
| 2) Sampling time | : 1.5 minutes/1 pump stroke | |
| 3) Detectable limit | : 0.5 ppm (200mℓ) | |
| 4) Shelf life | : 1 year | |
| 5) Operating temperature | : 0 ~ 40 °C | |
| 6) Reading | : Direct reading from the scale calibrated by 1 pump stroke | |
| 7) Colour change | : Pale yellow → Pale blue | |

2. RELATIVE STANDARD DEVIATION

RSD-low : 10 % RSD-mid. : 5 % RSD-high : 5 %

3. CHEMICAL REACTION

Chromium oxide is reduced.



4. CALIBRATION OF THE TUBE

GAS CHROMATOGRAPHY

5. INTERFERENCE AND CROSS SENSITIVITY

Substance	Interference	Coexistence
Esters	Similar stain is produced.	Higher readings are given.
Alcohols	∕	∕
Ketones	∕	∕
Aromatic hydrocarbons (more than C ₃)	Whole reagent is changed to Pale brown.	∕

(NOTE)

In case of 2 strokes, following formula is available for the actual concentration.

Actual concentration = 1/2 × Reading value.