

1. PERFORMANCE

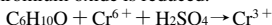
- 1) Measuring range : 2-100 ppm
Number of pump strokes : 3 (300ml)
- 2) Sampling time : 4.5 minutes/3 pump strokes
- 3) Detectable limit : 1 ppm
- 4) Shelf life : 3 years
- 5) Operating temperature : 0 ~ 40°C
- 6) Temperature compensation : Necessary (See "TEMPERATURE CORRECTION TABLE")
- 7) Reading : Direct reading from the scale calibrated by 3 pump strokes
- 8) Colour change : Yellow → Pale blue

2. RELATIVE STANDARD DEVIATION

RSD-low : 10% RSD-mid. : 10% RSD-high : 5%

3. CHEMICAL REACTION

Chromium oxide is reduced.



4. CALIBRATION OF THE TUBE

GAS CHROMATOGRAPHY

5. INTERFERENCE AND CROSS SENSITIVITY

Substance	Interference	Coexistence
Aliphatic hydrocarbons	Whole stain is changed to brown.	The accuracy of reading is not affected.
Aromatic hydrocarbons	∕	∕
Halogenated hydrocarbons	∕	∕
Alcohols	FIG.1 Similar stain is produced.	Higher readings are given.
Esters	Pale ringed stain is produced near the bottom of the reagent.	The accuracy of reading is not affected.

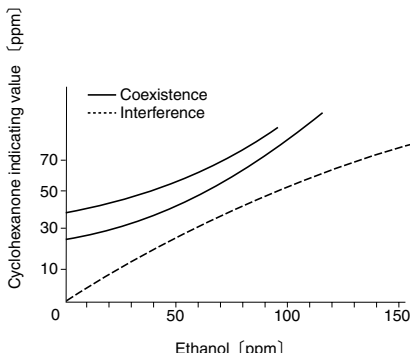


FIG.1 Influence of Ethanol

TEMPERATURE CORRECTION TABLE

Scale Readings (ppm)	True Concentration (ppm)			
	10°C (50° F)	20°C (68° F)	30°C (86° F)	40°C (104° F)
100	—	100	75	60
80	120	80	62	50
60	84	60	46	37
40	52	40	30	25
20	26	20	16	13
10	14	10	8	7
2	3	2	2	1