

## 1. PERFORMANCE

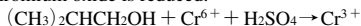
- |                             |  |
|-----------------------------|--|
| 1) Measuring range          | : 5-100 ppm  |
| Number of pump strokes      | 3 (300ml)  |
| 2) Sampling time            | : 4.5 minutes/3 pump strokes                                 |
| 3) Detectable limit         | : 2 ppm  |
| 4) Shelf life               | : 2 years  |
| 5) Operating temperature    | : 0 ~ 40 °C  |
| 6) Temperature compensation | : Necessary (See "TEMPERATURE CORRECTION TABLE")             |
| 7) Reading                  | : Direct reading from the scale calibrated by 3 pump strokes |
| 8) Colour change            | : Yellow → Pale blue   |

## 2. RELATIVE STANDARD DEVIATION

RSD-low : 10 %    RSD-mid. : 10 %    RSD-high : 5 %

## 3. CHEMICAL REACTION

Chromium oxide is reduced.



## 4. CALIBRATION OF THE TUBE

GAS CHROMATOGRAPHY

## 5. INTERFERENCE AND CROSS SENSITIVITY

Substance	ppm	Interference	Coexistence
Alcohols FIG.1		Similar stain is produced.	Higher readings are given.
Toluene FIG.2	200	Whole reagent is changed to Pale blue.	∕
Hexane	1,000	The accuracy of readings is not affected.	The accuracy of readings is not affected.
Trichloroethylene	∕	∕	∕
Ethyl acetate	∕	∕	∕

— Coexistence  
- - - Interference

iso-Pentyl alcohol  
indicating value (ppm)

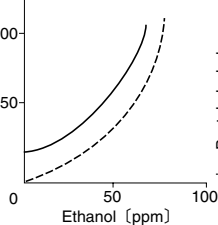


FIG.1 Influence of Ethanol

iso-Pentyl alcohol  
indicating value (ppm)

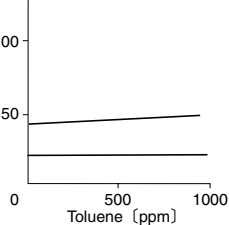


FIG.2 Influence of Toluene

### TEMPERATURE CORRECTION TABLE

Scale Readings (ppm)	True Concentration (ppm)			
	0 °C (32 °F)	10 °C (50 °F)	20 °C (68 °F)	30 °C (86 °F)
100	—	—	100	80
80	—	—	80	65
60	—	83	60	50
40	90	50	40	33
20	32	23	20	16
10	14	11	10	9
5	5	5	5	5