

SENSALARM[®] FLEX

Advanced HazLoc All-In-1 Gas Detection



**Flexible Configurations
Flexible Sensor Options
Flexible Installation**

**Trusted Solutions for a
Wide Range of Critical Safety Applications.
C1D1 Hazardous Area Certification.**

+ Detection at Every Point.



SENSIDYNE[®]
Industrial Health & Safety Instrumentation

SENSALARM[®] FLEX

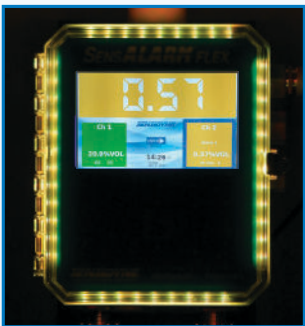
Advanced Safety Universal Gas Detection System



"All Safe" Mode



"Fault" Mode



"Alert" Mode



"Alarm" Mode

Flexible Gas Monitor Configurations

- » Advanced Fully-Configurable Gas Detection System
- » Configurable for 1 or 2 Local or Remote Sensors
- » 4 Customizable Modes of LED Strobe Lights Integrated into Enclosure Body
- » 4 to 20 mA and Modbus Communication (TCP or RS-485)
- » Up to 8 SPDT 5A Relays
- » 95 dB Horn and External Reset Button
- » Optional Battery Back-Up

Flexible "Plus Series" Intelligent Sensors

- » Transportable Calibration
- » Comprehensive On-Board Sensor Data
- » Percent Remaining Sensor Life
- » Plug-and-Play with Auto Configuration
- » Time-stamped Min/Max Concentration and Calibration Data

Flexible Installation and Maintenance

- » Turn-Key Solution – Low Install Cost
- » Remote Sensor/Calibration - up to 100 Feet Away
- » In-Situ Monitoring, Duct Mount, or Sample Draw
- » Non-Intrusive Configuration/Maintenance Interface

SensAlarm FLEX is a complete turn-key gas detection system in one enclosure. The system is fully equipped with built-in LED strobes, horn, and highly-visible 7" color LCD screen. At the core of **SensAlarm FLEX** is an advanced Intelligent Sensor platform with non-volatile memory for all key application variables and sensor data. A non-intrusive user interface enables operational customization and access to sensor life parameters, TWA alarms, calibration data, and other information with date and time recording.

The **SensAlarm FLEX** sensor interfaces are universal in that they accept all Sensidyne **Plus Series sensors**. Monitoring in high, low or adjacent locations is simplified by remote mounting the sensor up to 100 feet away. The automatic uploading of variables, alarm values and sensor information when a sensor is plugged in greatly simplifies installation and maintenance. **Transportable calibration** allows sensor calibration at the point of installation or in a workshop, then **hot-swapping** the sensor in the field.

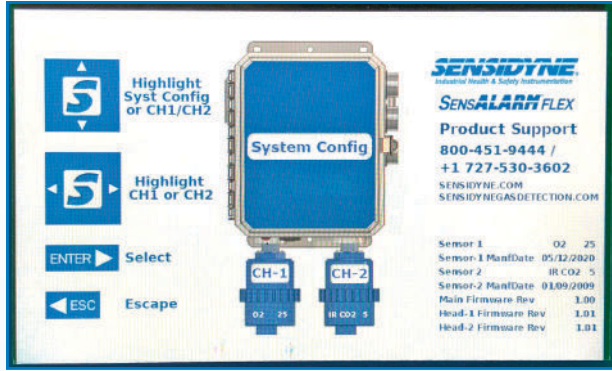
SensAlarm FLEX is the ideal gas monitoring solution for labs, gas cylinder storage, industrial work areas, control room protection or any other applications where users benefit from a packaged gas detection system that works with all **Plus Series sensors**.

NOTE: User can configure the action for each strobe mode.



Easy, Intuitive User Interface

SensAlarm FLEX transmitters have a non-intrusive, menu-driven interface designed for effortless set-up and maintenance. The menu is free from complex icons and symbols and does not require use of remotes or connectors to interface with the transmitter. Below are actual menus and system displays.



7" LCD screen, intuitive menu interface



Optional LED Light Stack

General Purpose usage only, NOT HazLoc



Selected channel displays in top section



CH-1 Fault
CH-2 All Safe



CH-1 All Safe
CH-2 Alert



CH-1 All Safe
CH-2 Alarm



Dual and Single 316 Stainless Steel Sensor Heads



Dual and Single Aluminum or Poly Sensor Heads



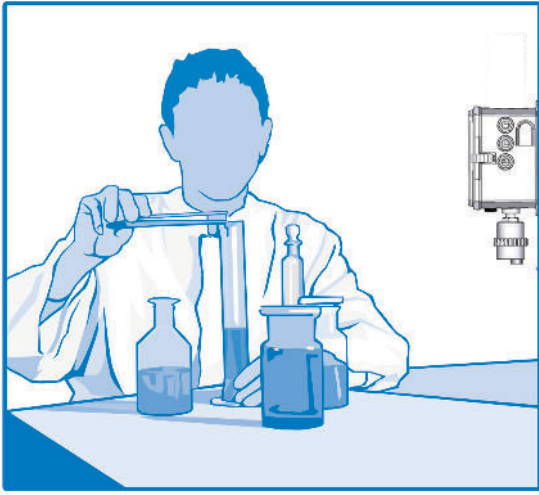
SENSALARM FLEX

Hazardous Area Certification

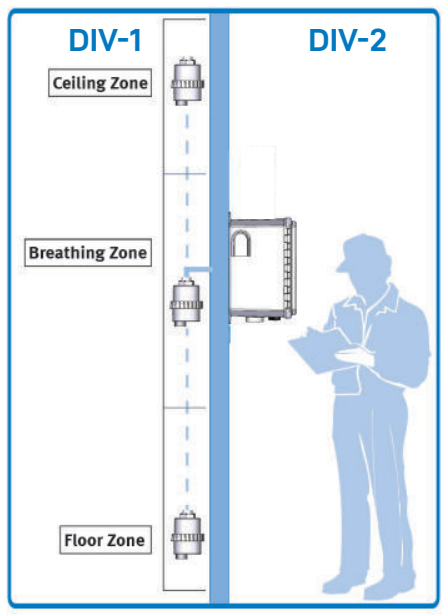
Sensor Interface: Class 1, Div-1/Zone 0

Main Display: Class 1, Div-2/Zone 2

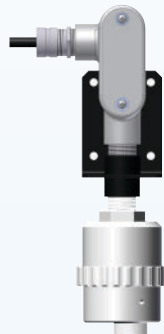
Local Detection



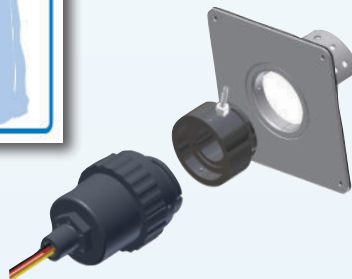
Remote Detection



Remote Mount



Duct Mount



Technical Specifications

SENSORS

Gas..... All Sensidyne Plus Series sensors
ToD Test-On-Demand available for specific toxic sensors

ELECTRICAL

Design Microprocessor based with nonvolatile memory
Automatically resumes operation after power failure
Power 100-240 VAC, 50/60 Hz (GP only) or 20-30 VDC
(GP or HazLoc)
Battery Optional battery back-up available
Outputs 4-20 mA up to 600 ohms; Standard Modbus RS-485
RTU or Ethernet TCP
Light Stack *(General Purpose usage only)* NEMA 4X, optional up to
4 strobes with red, amber, blue, and green strobes
Horn..... 95 dB piezo horn
Relays..... 4 standard SPDT configurable relays. Optional 4 more
SPDT configurable relays. Contact ratings: 6 amps at 120
VAC or 28 VDC resistive, 3 amps at 240 VAC resistive.

ENCLOSURE

Material Polycarbonate
Environment..... NEMA 4X design
Type..... Wall mount with tabs
Overall Size..... W x H x D: 8 x 10 x 6 in. / 20.3 x 25.4 x 15.24 cm
Weight Range..... 12.25-24.17 lbs / 4.57-9.02 kg
(with 1-2 AL or SS sensor heads)
Conduit..... 3/4 inch NPT connector supplied (side).
Temp..... -4° to 122°F / -20° to 50°C
Humidity..... 0-90 %RH, non-condensing.
Location..... Indoor or Outdoor
Sensor Head..... Enclosure and retaining ring are black anodized
aluminum, PVC, or 316 stainless steel; splash guard and
most other accessories are made of Polycarbonate.

DISPLAYS & CONTROLS

Display..... 7 in. / 17.8 cm color LCD
Security..... Password Protected Configuration Menu
Auto Config..... System automatically senses the presence of optional
modules and features
Reset/silence..... External push button switch for acknowledge (Alarm
sequence 3A)
Annunciators..... Audible (+95dB) & Visual single strobe with optional
second strobe

APPROVAL RATINGS

Display
Flame proof ATEX II 3 [1] G Ex ic nA nC [ia Ga] IIC T4 Gc
Non-Incendive NEC and CEC Class I Div 2,
(Enclosed Break) Groups A, B, C, D;
Class II Div 2 Grps E, F, G; Class III T4

Sensor Interface

Intrinsic Safety NEC and CEC Class I Div 1,
Grps A, B, C, D;
Class II Div 1 Grps E, F, G; Class III T4
ATEX Ex ia IIC Ga T4
IECEx II 3 [1] G Ex ic nA nC [ia Ga] IIC T4 Gc
Zone 2: Display, Zone 0: Sensor Interface
CE Mark ATEX Directive 94/9/EC
TUV CSA C22.2 No. 61010-1:2012/U3:2023-06
UL 61010-1:2012/R:2023-06

SensAlarm Flex provides true installation and application flexibility for local or remote mount sensors to place the sensor closer to potential gas sources.

SAFlexDS4pg rD.012226